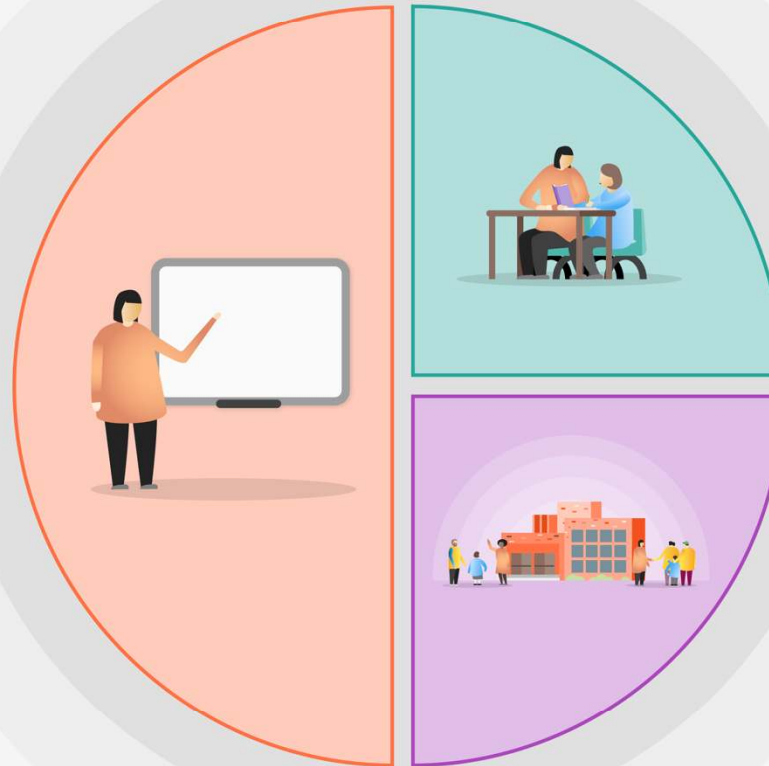


Post 16 Bursary – 2021-2022

Cann Bridge School is committed to ensuring that the needs of all pupils are met using all appropriate resources and specialist teaching techniques.

1 Teaching

- The bursary will be used by the students' families to ensure that any equipment not directly provided by the school is supplied using the bursary.
- The students granted the bursary will be in the teaching group in Post Bridge College and will receive 1:1, small group and whole group sessions according to the activity offered.



2 Targeted academic support

Where a student requires any additional support and this support requires any additional equipment or other resources not supplied directly by the school the students' families will use the bursary to supply this.

3 Wider strategies

Students in special schools at Post 16 have to contribute towards their home/school transport costs and the bursary can be used to support this to ensure the student does access the course.

The eligibility criteria for the bursary can be found here: <https://www.plymouth.gov.uk/sites/default/files/Plymouth%2016-19%20Bursary%20Statement%202020-21.pdf>