

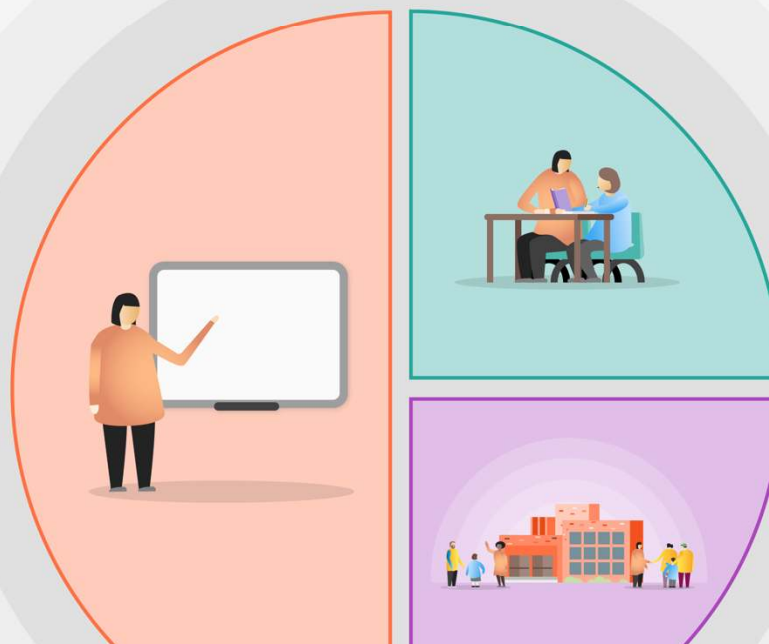
Use of Covid-19 Catch Up Funding – 2021-2022

Cann Bridge School is committed to ensuring that the needs of all pupils are met using all appropriate resources and specialist teaching techniques. It continues to be the case that most pupils have shown remarkable resilience during and after the periods of education affected by the responses to the Covid-19 pandemic and with good support are returning to learning well. A small number of pupils continue to experience some additional difficulty; however all pupils have demonstrated positive progress over the year 20-21. The school will continue to support these pupils in accessing an appropriate curriculum.

1 Teaching

Teachers will:

- Continue to support the delivery of an appropriate curriculum meeting the holistic needs of each pupil
- During Term 1 pupils were assessed in terms of both their academic levels and their emotional well-being following the summer break
- From the information identify pupils who require additional academic support or an extension to the differentiated return to school curriculum
- During Term 2 put in place the additional or differentiated support to ensure that pupils are making expected progress during term 3
- Where pupils are demonstrating a higher level of need to support their return the school will develop a plan with parents to support a positive return to school and following this work to return the pupils to the full curriculum.



COVID-19 Catch-Up Premium		
Content	Compliant Y/N	Additional Notes
The grant will be used to support additional staffing across the school to ensure 1, 2 and 3 can be met.	Y	The full grant will be used in the staffing line.
Teachers will use formative and summative assessment information to demonstrate the impact of the additional staff support at Pupil Progress Reviews.	Y	PPR will be completed in January, April and July; Governors attend these meetings.

2 Targeted academic support

The school has ensured that there is a high level of staff in all class groups and that this is able to meet additional requirements identified during Terms 1 and 2. This staffing ratio enables group, small group and 1:1 support and this will be targeted at pupils where required to meet their learning and wellbeing needs.

3 Wider strategies

A very small number of pupils have been identified as requiring wider support in order to return successful to school. Interim Annual Reviews of the EHCP have been held for all these pupils and specific recommendations from these meetings have been implemented to support the pupils.